

# TULIP



## USER MANUAL

**WATCH THIS 30 SEC. VIDEO**

The easiest way to learn  
how to get great curls

[instylertulip.com](http://instylertulip.com)

A video thumbnail featuring a woman with dark hair using the IN STYLER auto curler. A thumbs-up emoji is overlaid on the left side of the video frame. The video player interface includes labels for "Section", "Spray", "Comb", and "Flip Out". The IN STYLER logo is visible in the bottom right corner of the video frame.

[www.instylertulip.com](http://www.instylertulip.com)

# IMPORTANT SAFETY INFORMATION

WARNINGS: TO REDUCE THE RISK OF SERIOUS INJURY, READ ALL INSTRUCTIONS AND WARNINGS COMPLETELY BEFORE USING THIS PRODUCT.

The InStyler Auto Curl has been carefully engineered for both effectiveness and safety. However, basic safety precautions should always be followed when using any device, especially when children are present.

**WARNING: The power cord on this product contains lead, a chemical known to the State of California to cause [cancer, and] birth defects or other reproductive harm. WASH HANDS AFTER HANDLING.**

- **INSTYLER AUTO CURL IS NOT INTENDED FOR USE BY CHILDREN.**
  - **KEEP AWAY FROM WATER.**
  - **DANGER** - As with most electrical appliances, electric parts are live even when the switch is off. To reduce the risk of electric shock:
1. **ALWAYS UNPLUG UNIT IMMEDIATELY AFTER USE.**
  2. **DO NOT** use while bathing or showering.
  3. **DO NOT** place or store the InStyler Auto Curl where it can fall or be pulled into a tub, toilet

or sink, or any other water source.

4. **DO NOT** use InStyler near water.
5. **DO NOT** place or drop into water or other liquid.
6. If the InStyler Auto Curl falls into water, **DO NOT REACH INTO THE WATER!** Unplug device immediately.

**IMPORTANT:** The InStyler Auto Curl should **NEVER** be used with any type of synthetic hair extension. The Auto Curl can be used on real human hair extensions **ONLY**, with the following precautions: If your real human hair extensions are sewn in, you can use your InStyler up to the scalp. If your real human hair extensions are glued in, make sure you start with your Auto Curl below the glue.

**WARNING TO REDUCE THE RISK OF BURNS, FIRES, ELECTRICAL SHOCK, DEATH, INJURY OR DAMAGE TO PROPERTY:**

1. The InStyler Auto Curl should be used only on clean, dry hair.
2. Counterfeit versions of the InStyler Auto Curl do exist. To ensure you have purchased a genuine product and to reduce the risk of burns, electrical shock and malfunctions, purchase from authorized dealers only.
3. Use Auto Curl only for its intended purpose as described in this manual. **DO NOT** use attachments not recommended by the manufacturer.
4. **NEVER** operate the InStyler Auto Curl if it has a damaged cord or plug, if it is not working

- properly, if it has been dropped or damaged, or if it has been dropped in water. If the power supply cord or plug is damaged, the InStyler must be replaced by the manufacturer or an authorized service agent in order to avoid a hazard.
5. Keep this product and the cord away from water and heated surfaces. **DO NOT** wrap the cord around the InStyler Auto Curl until it is completely cool.
  6. This product has moving parts. Children and pets should be kept away when product is in use.
  7. The InStyler Auto Curl should **NEVER** be left unattended when plugged in.
  8. **NEVER** use while sleeping.
  9. **NEVER** drop or insert any object into any opening or hole on The InStyler Auto Curl.
  10. **DO NOT** operate outdoors or where aerosol (spray) products are being used or where oxygen is being administered.
  11. **DO NOT** use an extension cord with the InStyler Auto Curl.
  12. The InStyler Auto Curl barrel may be hot during use. **DO NOT** allow eyes or skin to touch the heated surfaces.
  13. **DO NOT** operate with a voltage converter.
  14. This product is designed for hair styling. **DO NOT** use for any other purpose.
  15. This product is a personal care device and is **NOT** intended for commercial use.
  16. **DO NOT** use this product if any parts become

damaged. Inspect the InStyler Auto Curl prior to beginning hair styling to ensure all parts are secure in their place.

17. **DO NOT** subject this product to excessive force or shock that may result in malfunction, shorter lifespan or distorted parts.
18. **DO NOT** tamper with this product's components. Doing so may cause unnecessary damage. This product contains no user-serviceable parts.
19. **DO NOT** use liquid cleaners, aerosol cleaners or any cleaner containing alcohol, detergent, abrasive or corrosive materials.
20. **DO NOT** use the InStyler Auto Curl if you are 12 years old or younger.

### **SAVE THESE INSTRUCTIONS.**

**KEEP THIS MANUAL IN A SAFE PLACE FOR FUTURE REFERENCE AND MAKE SURE ANYONE WHO USES THIS PRODUCT ALSO READS THIS MANUAL. READ ALL INSTRUCTIONS BEFORE USING YOUR INSTYLER AUTO CURL. NO ASSEMBLY REQUIRED.**

The InStyler Auto Curl is for household use only. The device has a polarized plug (one blade is wider than the other). As a safety feature, this plug will only fit in a polarized outlet one way. If the plug does not fully fit in the outlet, reverse the plug. If it still does not fit, contact a qualified electrician for help. **DO NOT** attempt to defeat this safety measure.

TULIP

**30 Second Video! Fastest way to great curls.**



**CONGRATULATIONS!** You've just purchased a great innovation in hair curling. Before you get started, be sure to watch the videos at **www.instylertulip.com!**



## SECTIONING PETAL

The Sectioning Petal will show you the max amount of hair you should put in your Tulip.



If you put too much hair into your Sectioning Petal, all the hair will not fit in the hole. Make sure your section is small enough to fit entirely in the hole.



**This is important to get the best results and prevent overloading the Tulip.**

For tighter curls use smaller sections of hair.

Once you have used your Sectioning Petal, take your section of hair and place it in between the guides on your Tulip. Now you're ready to curl!

## CONTROLS

### DIRECTION SWITCH

#### *3 Rotation Settings*

“R” rotates the barrel to the right. “L” rotates the barrel to the left. “A” will automatically switch rotation from left to right after each completed curl.

### POWER/HEAT SELECT

Powers unit on and allows you to select heat setting (See chart on p7).

### TANGLES & JAMS

In the unlikely event of a tangle, slide the Power/Heat Select button to “O,” untangle the hair. Then, turn the unit back on to reset and re-load your hair.

### ROTATION BUTTON

Tap and immediately release to start rotation. Unit will automatically rotate until the timer beeps.

### TIMER SWITCH

#### *3 Timer Settings*





Slide switch up to select desired amount of time (see chart on p7).

### POWER INDICATOR LIGHT

When the light stops blinking, the unit is ready for use.



## SETTINGS

CURL TYPE		TEMP.	HAIR TYPE	TIMER
Beachy Waves		Low (350°F)	Fine/Medium/Thick	Remove when rotating stops
Soft, Loose Curls		Low (350°F)	Fine	3 sec.
		Medium (390°F)	Medium/Thick	3 sec.
Medium Body Curls		Low (350°F)	Fine	8 sec.
		Medium (390°F)	Medium	8 sec.
		High (430°F)	Thick	8 sec.
Tight, Striking Curls		Medium (390°F)	Fine	12 sec.
		High (430°F)	Medium/Thick	12 sec.



Use caution when using high heat on fine hair.

## DIRECTION SETTINGS



To style your hair **away from your face** select (R when styling on the right side of your head and L) when styling on the left side of your head. To style **toward your face** select (L) when styling on your right side and (R when styling on your left side. For a more **natural and relaxed look** select (A). This will automatically alternate between right and left after each completed curl resulting in a less uniform style.

## PREPARATION & SECTIONING



- Always start with clean, dry, product-free hair.
- Detangle entire head and comb out all sections.
- Sections should be a ½-inch to 1-inch. For tighter curls, use smaller sections. **DO NOT OVERLOAD THE UNIT.**
- Use the Sectioning Petal (see p.5) to learn the size of the section to use. This is important for the best results and to prevent overloading the Tulip.
- Style the under layers of your hair first.
- Next, style the top layers.
- Work around each side of your head to the nape of your neck.
- Light styling spray can be used after styling for longer lasting curls.



## LIGHTS & SOUNDS



### POWER INDICATOR LIGHT

After powering on the unit, the Power Indicator Light will begin to blink. When the light stops blinking, the unit is ready for use.



### WHAT'S THAT NOISE?

The beeping lets you know that the unit is working. **Keep your hair in the Tulip until you hear three quick beeps and the beeping stops.** That means that it is time to pull the unit out of your hair. The unit will stop rotating, but it is important that you keep the unit in the hair until you hear those 3 quick beeps.

After the three beeps, quickly pull the unit straight down to reveal your beautiful curl.

## HOW TO INSERT HAIR



First, determine your section size by using the Sectioning Petal (p.5). Always start with a 1/2-inch to 1-inch section of hair. Looking in the mirror, grab a section of hair from the midpoint and pull it taught.

**Place entire section of hair through the opening of the unit. Make sure ALL the hair is in the unit, behind the 2 grey dots.**

## HOW NOT TO INSERT HAIR



It is very important that the hair is placed correctly in the unit. Placing too much hair, or placing it improperly can lead to tangling.

Make sure ALL the hair is in the unit, behind the 2 grey dots.

## PREPARE TO CURL



Once you've chosen where to start the curl, gently hold the hair straight and to the side.

Then tap and immediately release the Rotation Button.

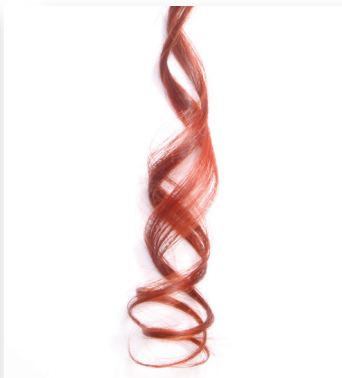
## CURL!



Make sure to **hold the unit steady** as the hair is automatically wrapped onto the barrel. Let go of the hair as it is fed into the unit.

Be sure to wait for the **3 quick beeps** (see p.9 for details), release the beautiful curl by quickly pulling the unit straight downward (The hair should never be heated longer than 20 seconds).

## ADVANCED TECHNIQUE: THE SWIRL CURL



After properly sectioning your hair using the Sectioning Petal, use your index finger to split your section of hair to both sides of the barrel and gently hold the hair in place until the hair is pulled into the unit.

## ADVANCED TECHNIQUE: SMOOTHING



The thermal guard around the barrel is open for the heated barrel to be easily accessible. To smooth a curl that is too tight, carefully hold the curl against the side of the heated barrel and slide the barrel up and down the curl to straighten the curl out and make it looser.

*NOTE: The barrel will be hot to touch. The thermal guard around the barrel is not heated to limit the amount of heat exposure to your hair. This makes the tool safer to use and allows you to put the guard directly against your head.*



## **MAINTENANCE**

Your InStyler Tulip is essentially maintenance free. No lubrication is needed. Keep all openings clear of grime and dirt. If cleaning is necessary, unplug the unit from the power source and wait for the unit to completely cool. Wipe the exterior of the unit with a cloth. The consumer should not attempt any repairs. If a repair is required, unplug the unit, allow it to cool, and return it for repair to authorized service representative.

## **STORAGE**

To store your InStyler Tulip, unplug and wait for it to fully cool. Store out of the reach of children and in a safe and dry location. Do not pull on cord at electrical source or wrap cord around the unit.

## **LIMITED 1 YEAR WARRANTY**

This warranty is for the original purchaser of the InStyler® Tulip, and is non transferable. Tré Milano, LLC warrants that InStyler® Tulip will have no defects in material and workmanship under normal household usage for 1 year from the date of purchase. Keep the original sales receipt for proof of purchase to attain warranty provisions. Within a two year period from the date of purchase, Tré Milano, LLC will repair or replace, on it's own accord, any InStyler® Tulip or parts found to be defective. This warranty does not cover any shipping and handling charges which may incur. This warranty does not include any damages caused by accident, misuse, neglect, abuse, use on a voltage other than marked on the product, or use for commercial purposes.

If your InStyler® Tulip is found to be defective within the time period of this warranty, please contact the Tré Milano, LLC Customer Service Department Toll Free number 800-280-7729. If the product is discontinued or no longer available, a replacement may be made with a similar product of equal or greater value. Any attempt to repair or service this product on your own will void the warranty.

[www.instylertulip.com](http://www.instylertulip.com)